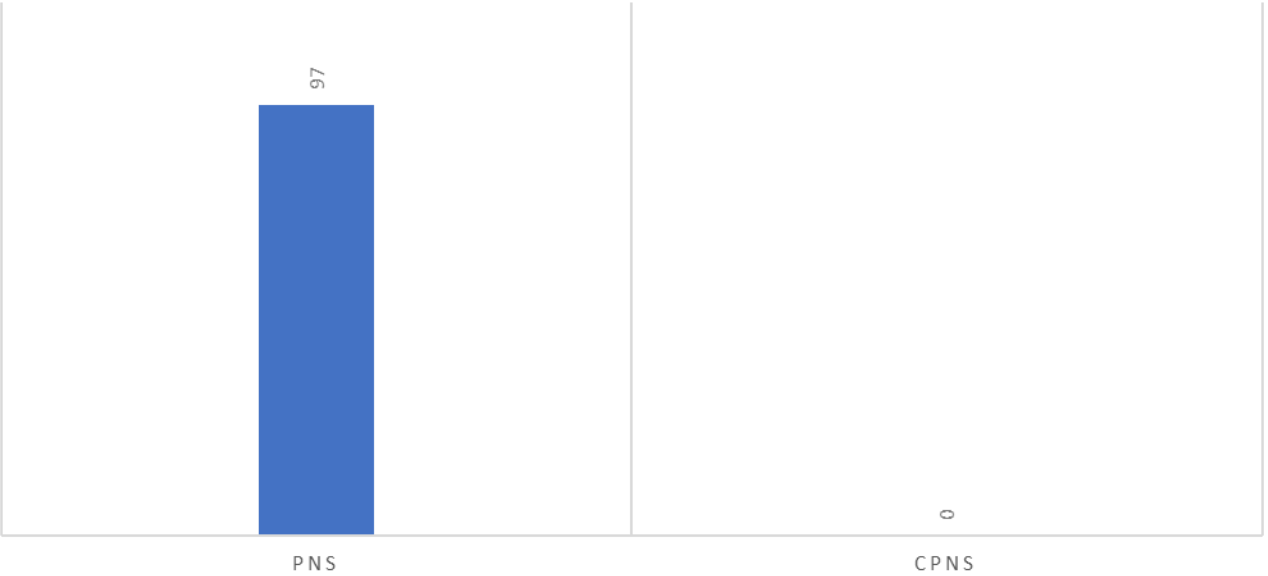




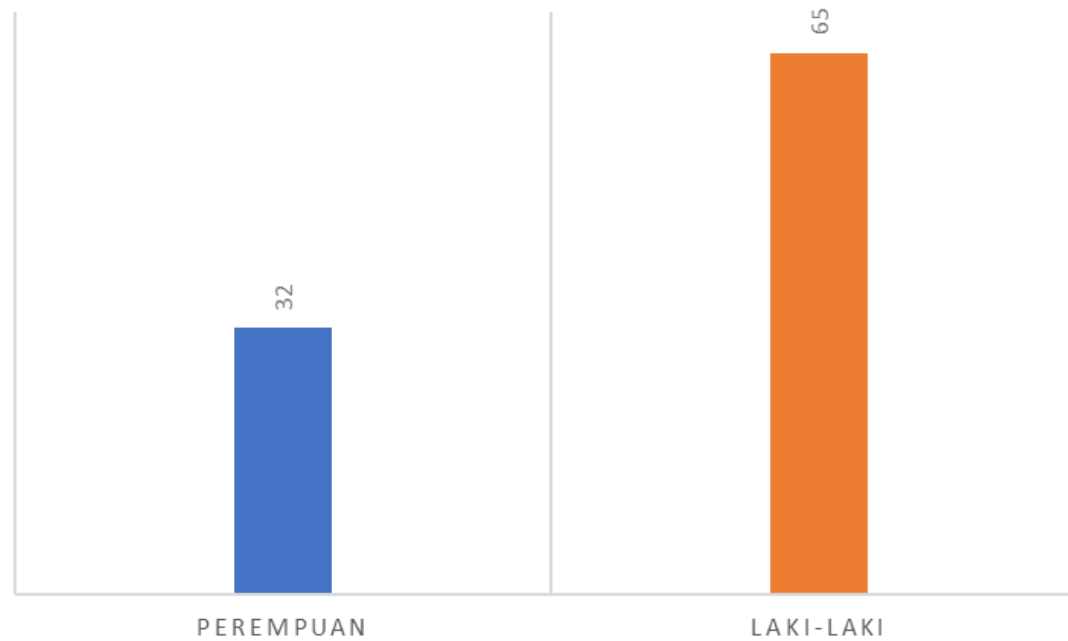
Statistik Pegawai
**PEGAWAI
POLTEKPAR MAKASSAR
TAHUN 2021**

FORMASI PEGAWAI BERDASARKAN DATA PNS & CPNS



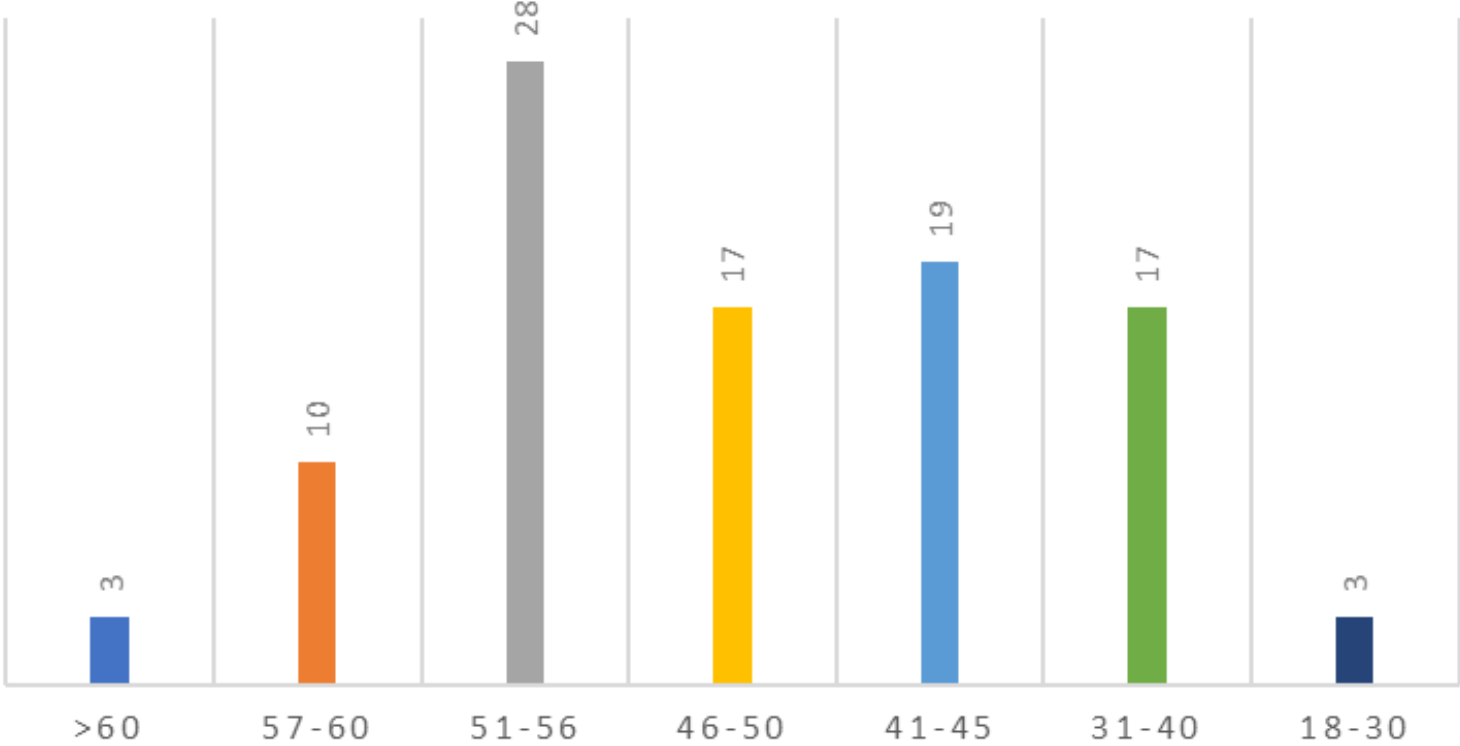
TOTAL ASN : 97

FORMASI PEGAWAI BERDASARKAN JENIS KELAMIN



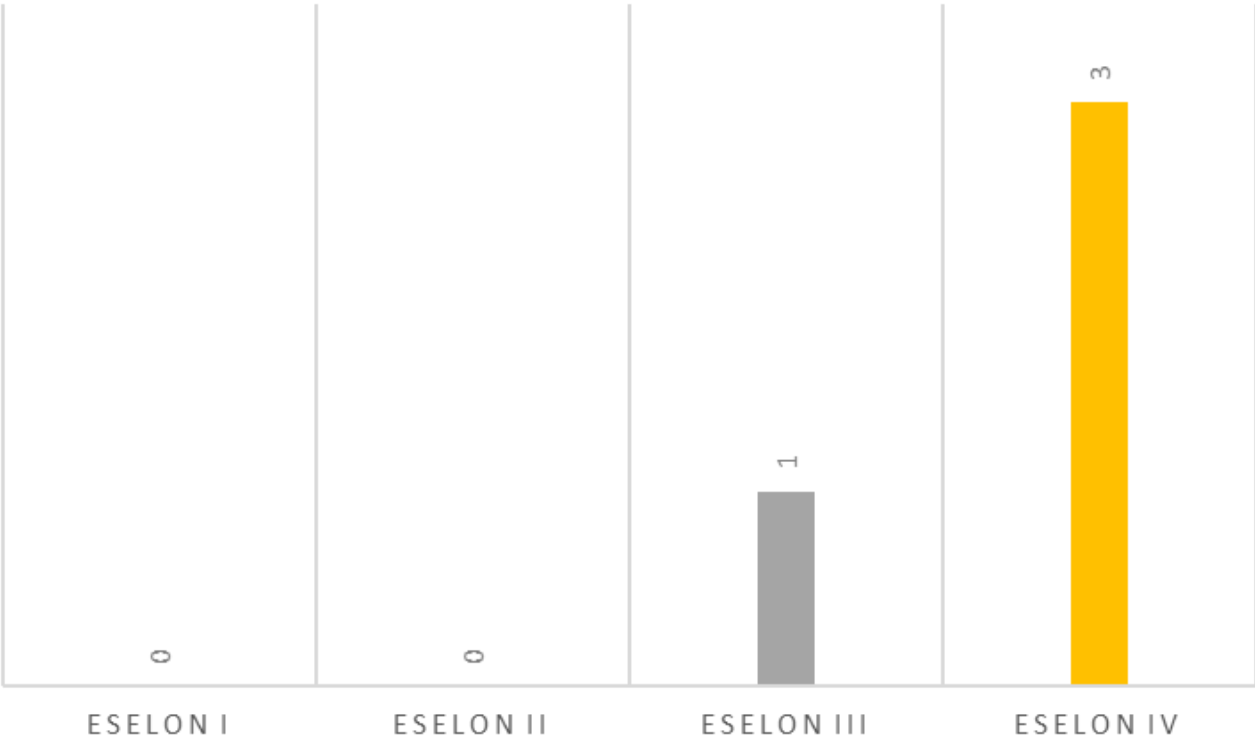
TOTAL ASN : 97

FORMASI PEGAWAI BERDASARKAN USIA



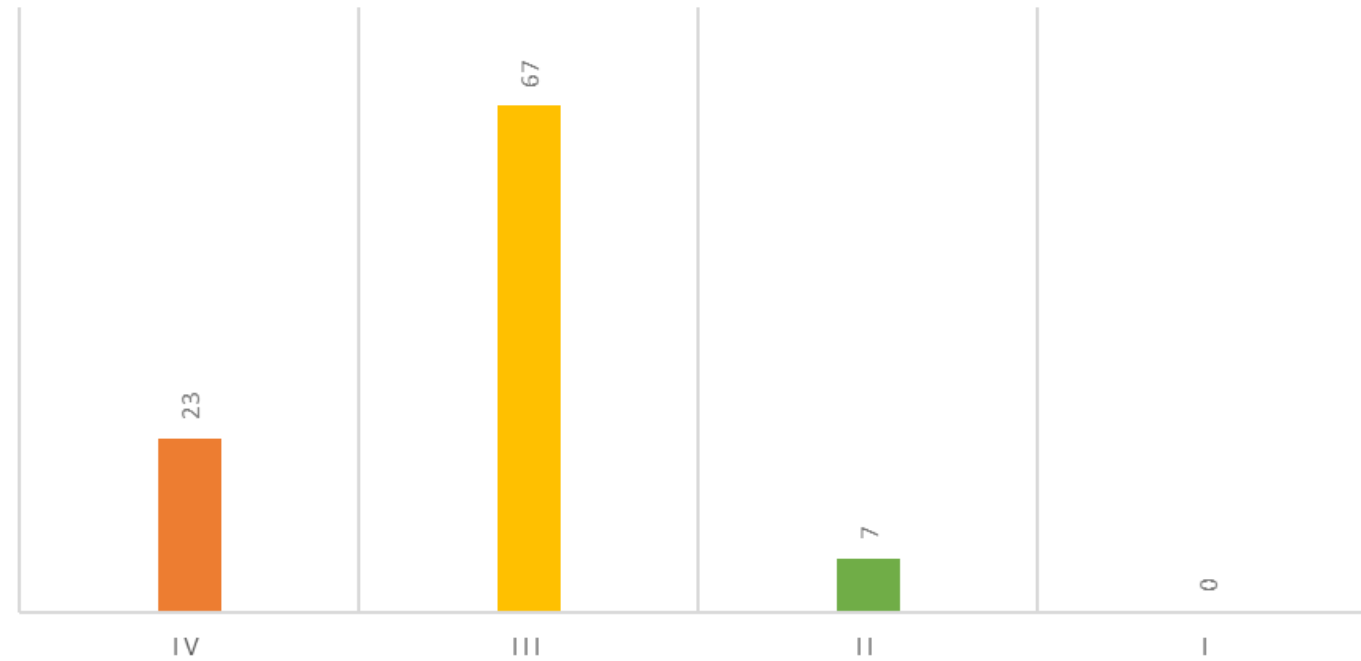
TOTAL ASN : 97

FORMASI PEGAWAI BERDASARKAN JABATAN ESELON



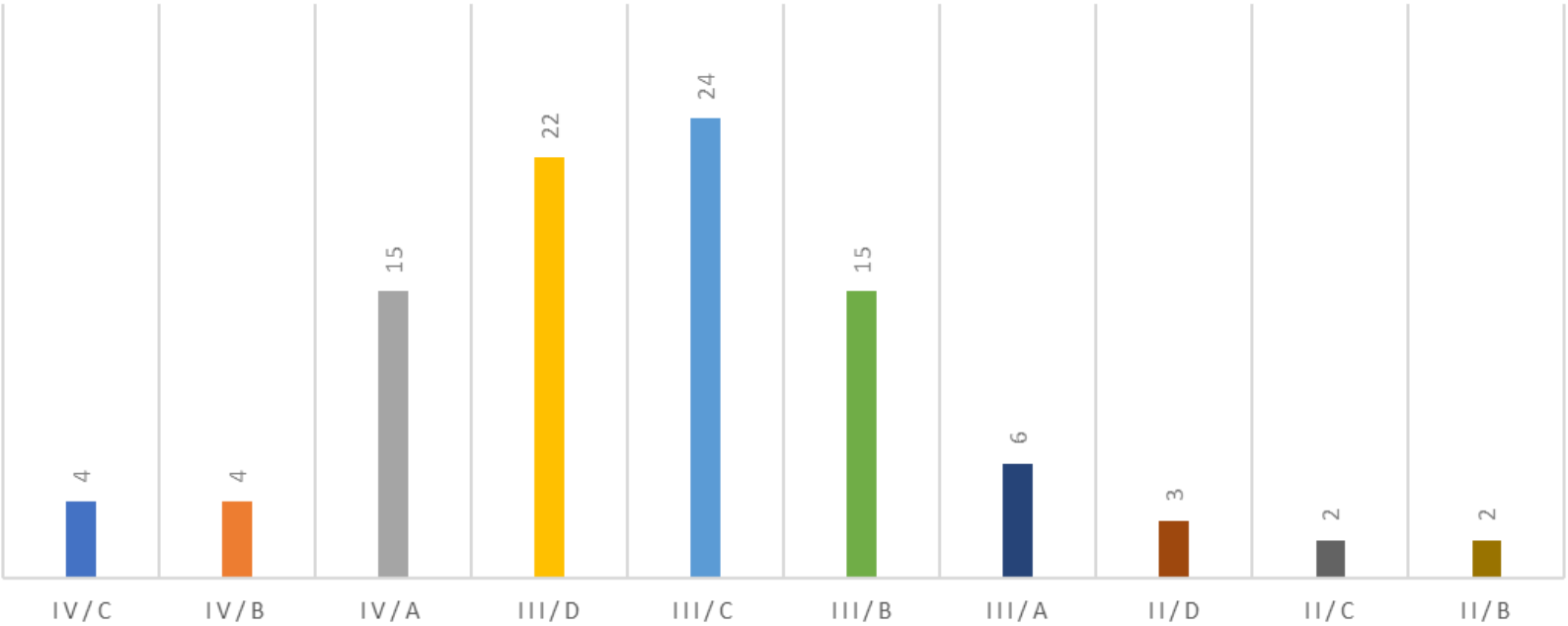
TOTAL ASN : 97

FORMASI PEGAWAI BERDASARKAN GOLONGAN



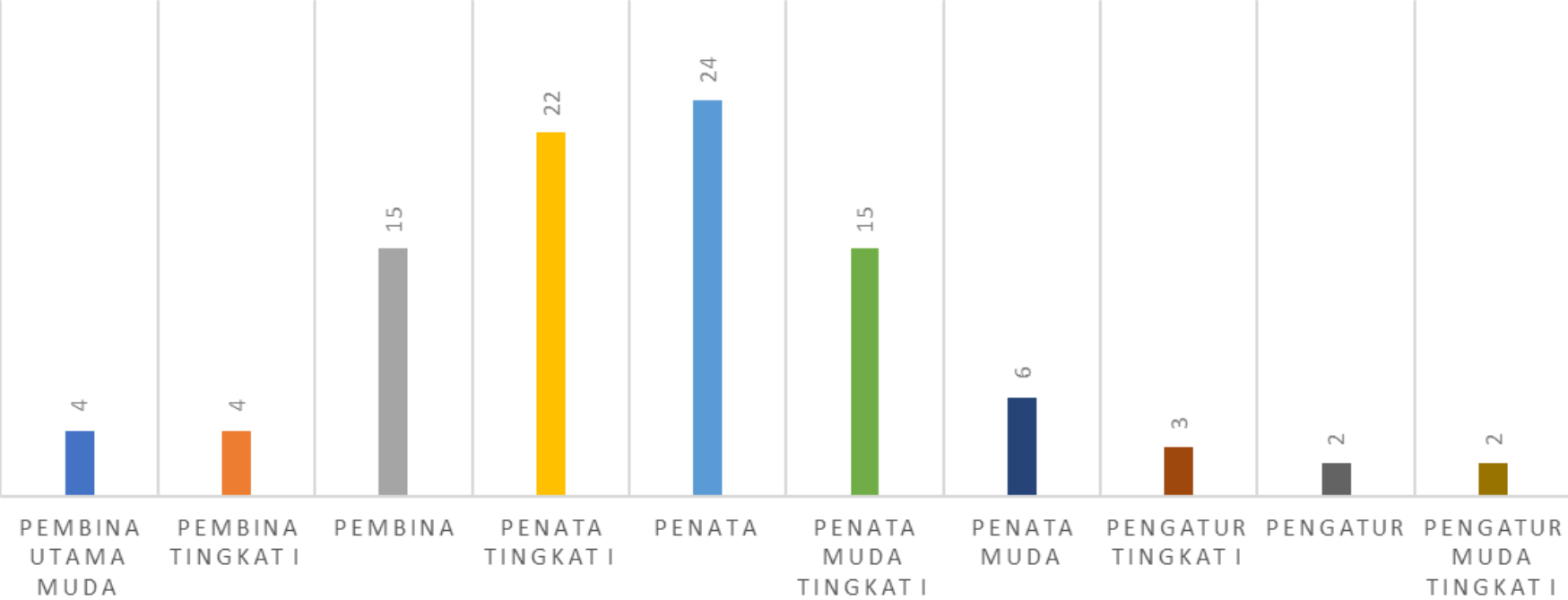
TOTAL ASN : 97

FORMASI PEGAWAI BERDASARKAN GOLONGAN



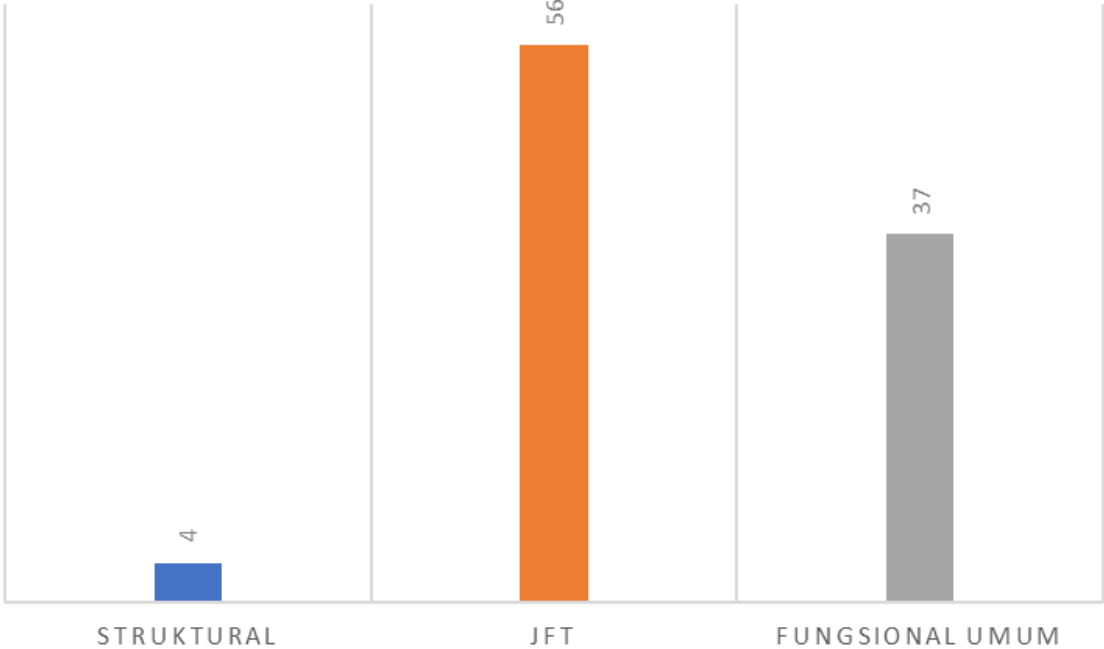
TOTAL ASN : 97

FORMASI PEGAWAI BERDASARKAN PANGKAT



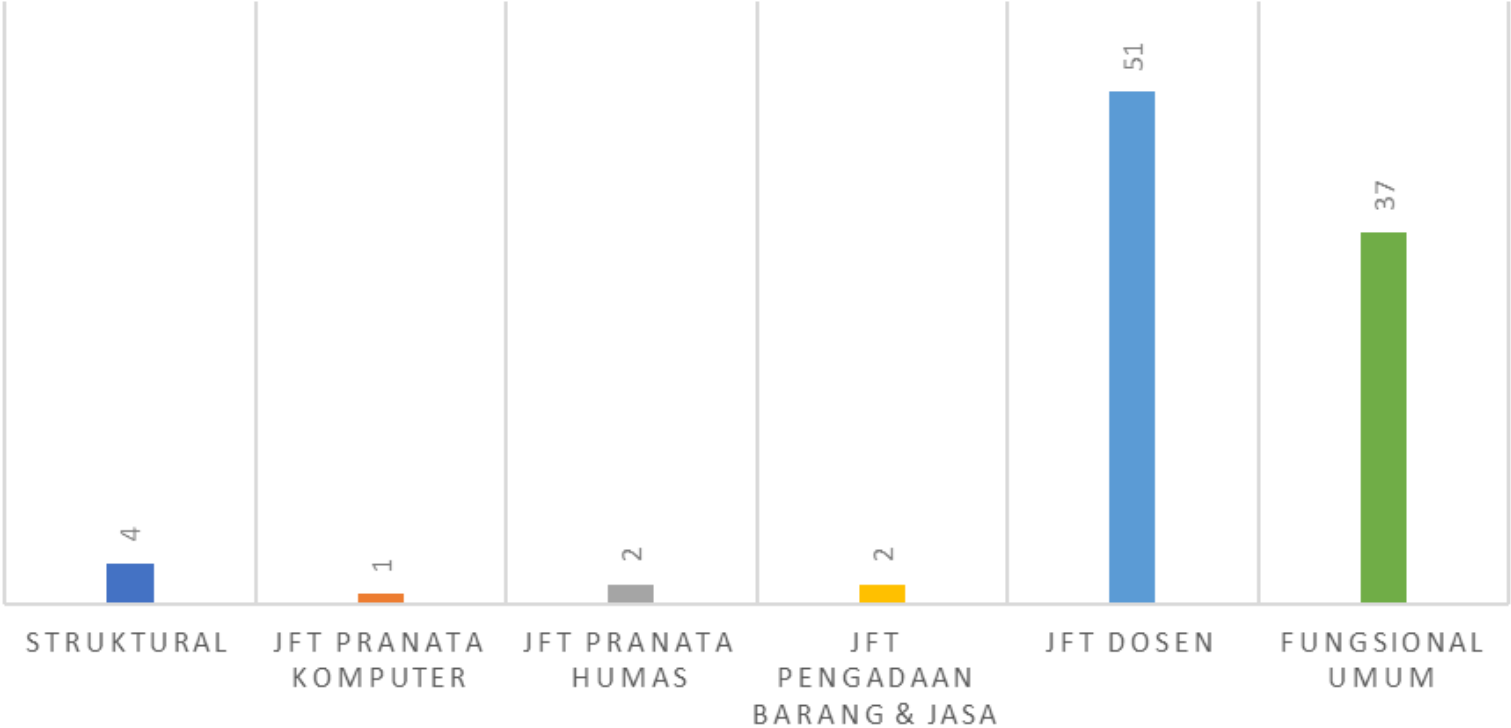
TOTAL ASN : 97

FORMASI PEGAWAI BERDASARKAN JABATAN



TOTAL ASN : 97

FORMASI PEGAWAI BERDASARKAN JABATAN



TOTAL ASN : 97